



rachel gockley . kc oh . monica gonzalez
aiid . fallo5 . school of design . carnegie mellon university

design directions

efficiency and flexibility

the system says less as user learns more

system tries to learn user's terminology

user can always barge in to correct

use auditory icons to increase speed through program

personality

begins very neutral, then adjusts to user's gender/personality

emotional aspects

reduce system-imposed emotionality

allow user-defined emotional content

reduce user expectation of voice recognition: command-and-control method

human language

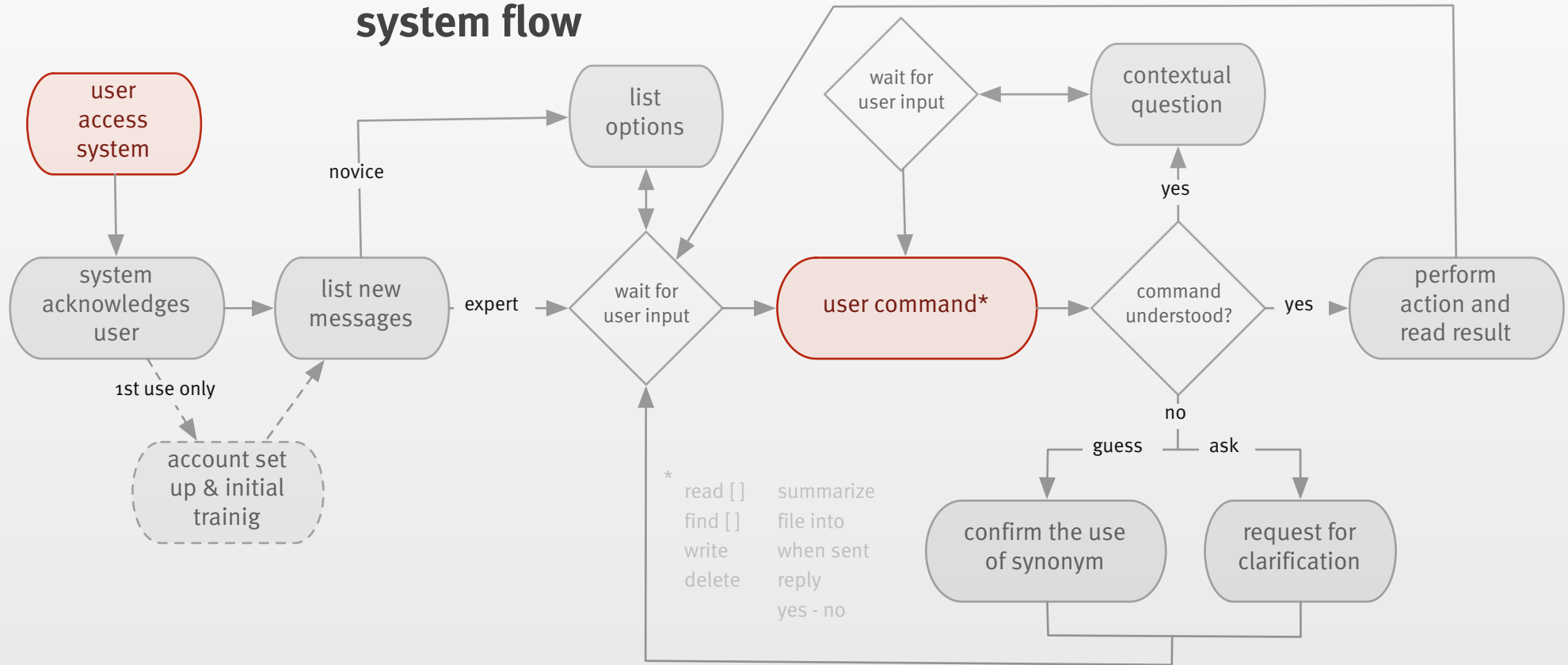
still allow flexibility of terms used

learn new words

library of synonyms

context based commands

system flow





Josephine Sterling :: Joe, 32, single

Blind Violinist. She plays the violin since the age of 6.

Used to live with his parents, now she moved to a new place, and she is living alone. Her parents and friends visit often.

As a professional, she performs with a highly regarded philharmonic and frequently travels with her group all over the world. She uses e-mail to communicate with family while she's not at home and to handle her rehearsal and professional appointments.



a trip to Munich...

The orchestra where Joe plays has been invited to perform at a yearly festival held in Munich, Germany. After flying from Boston to Munich, she is now at her hotel room and wants to verify the time and place that she is meeting with the group and the festival organizers. She also wants to write her parents to let them know she is doing ok.

Joe dials **1.800.ekomail...**



thank you
questions?